

SUSTAINABLE FABRICS



ACCREDITATION & CERTIFICATIONS



ECO RESPONSIBLE PRODUCTION

CAPACITY : 6 Million Metres / Month

COUNT RANGE: Ne 1/6s to 1/140s

GSM RANGE: 45 grams to 500 grams

WIDTH RANGE: 39" to 120"

RENEWABLE ENERGY

95% of Power is used from



WIND
POWER



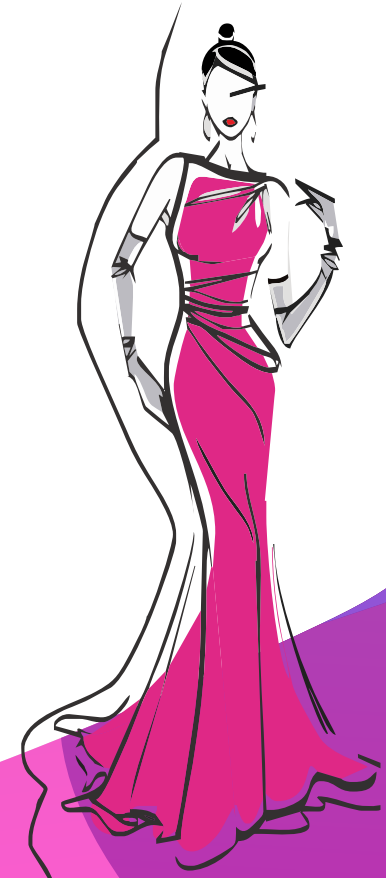
SOLAR
POWER



Dr. T.G.N Complex, 145 - F6, West Car Street
Tiruchengode, Namakkal - 637 211, Tamil Nadu, INDIA
+91 90959 98899, fabrics@anithaa.com
+91 78259 28899, +91 80980 28899, +91 70945 68899



WIDE RANGE OF **ECO RESPONSIBLE**
WOVEN FABRICS



FABRIC BLENDS

- ✓ POLYESTER / COTTON
- ✓ COTTON / VISCOSE
- ✓ MICRO MODAL / COTTON
- ✓ MICROMODAL / POLYESTER
- ✓ LYOCELL / COTTON
- ✓ MICROMODAL / TENCEL
- ✓ BAMBOO / COTTON
- ✓ COTTON/LINEN
- ✓ COTTON / VISCOSE
- ✓ POLYESTER / VISCOSE
- ✓ VISCOSE MELANGES
- ✓ FLAX WITH COTTON / VISCOSE



ECO RESPONSIBLE

WOVEN FABRICS



WIDE RANGE OF WOVEN FABRICS

- ✓ POPLIN, HIGH DENSITY PERCALES
- ✓ BOTTOM WEIGHT TWILL, DRILL DUCK
- ✓ SHEETINGS (Thread count 200-800)
- ✓ VOILES, CAMBRICS, DOBBIES, SATINS
- ✓ CREPES, FANCY WEAVES
- ✓ JACQUARDS
- ✓ MUSLIN DOUBLE / TRIPLE / FOUR LAYER FABRICS

REGULAR FINE VARIETIES

- ✓ 100% COTTON FABRICS, COMPACT, SIRO, ELITWIST, SLUB, HIGH TWIST, GASSED, NEPPY etc.
- ✓ BCI COTTON FABRICS
- ✓ CONTAMINATION FREE COTTON FABRICS (USA & AUS COTTON)
- ✓ CmiA COTTON FABRICS
- ✓ EXTRA LONG STABLE FABRICS SUVIN, SUPIMA, GIZA
- ✓ LENZING MICRO MODAL, TENCEL, FLAX
- ✓ 100% EUROPEAN LINEN
- ✓ COTTON STRETCH (SPANDEX)
- ✓ POLY STRETCH